

## Homes by Chapel Hill

*At Chapel Hill, every home we build is a collaborative effort of great vision, exceptional design and the meticulous coordination of highly skilled craftsmen. No idea is too large or request too small. Chapel Hill raises the bar of excellence by producing only a limited number of homes each year to ensure individualized attention at every level.*

*Homes by Chapel Hill is part of the Kings Way Homes family of homebuilding companies which has over 38 years of home building experience to create this truly unique organization. Our use of state-of-the-art construction techniques and reliable products that have been tested in actual homes in our area for more than three decades is invaluable. This wealth of experience and strong financial base makes our custom home building company truly extraordinary.*

*At Chapel Hill we understand that outstanding homes start with masterful design that takes into account every aspect of the building process, including the piece of land on which the home will be constructed, the personality of the homeowners, and the way each room will be used. Chapel Hill's exclusive designer, Vac Homolka, has created some of the most stunning home designs in our area and possesses the uncanny ability to extract a person's personality and infuse it into a home design.*

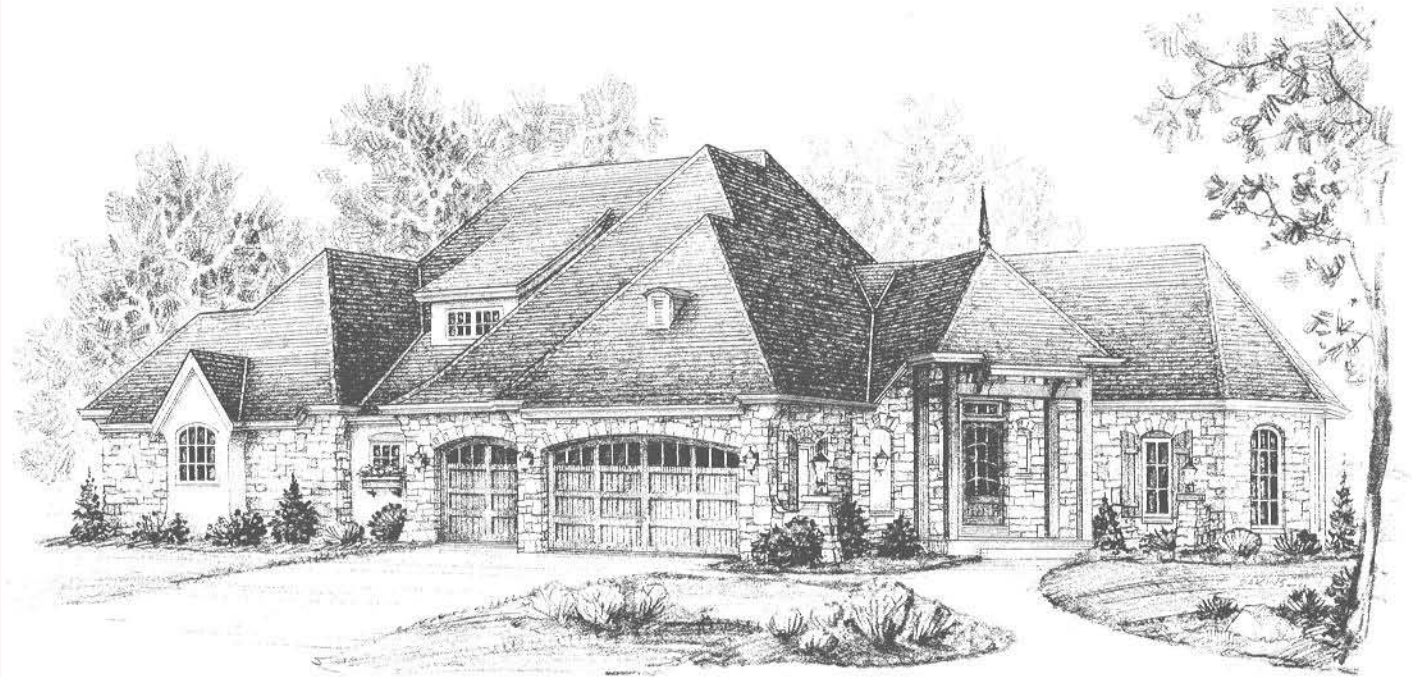
*We have been, and always will be, at the forefront of design, pushing the envelope of creativity to bring our customers not just a place to live, but a work of art that reflects their lifestyle... "the art of living exceptionally".*



700 Pilgrim Parkway  
Elm Grove, WI 53122  
262.797.3636  
[www.HomesbyChapelHill.com](http://www.HomesbyChapelHill.com)



## The Cherbourg



3,701 sq. ft. - 1st Floor Master Bedroom Suite

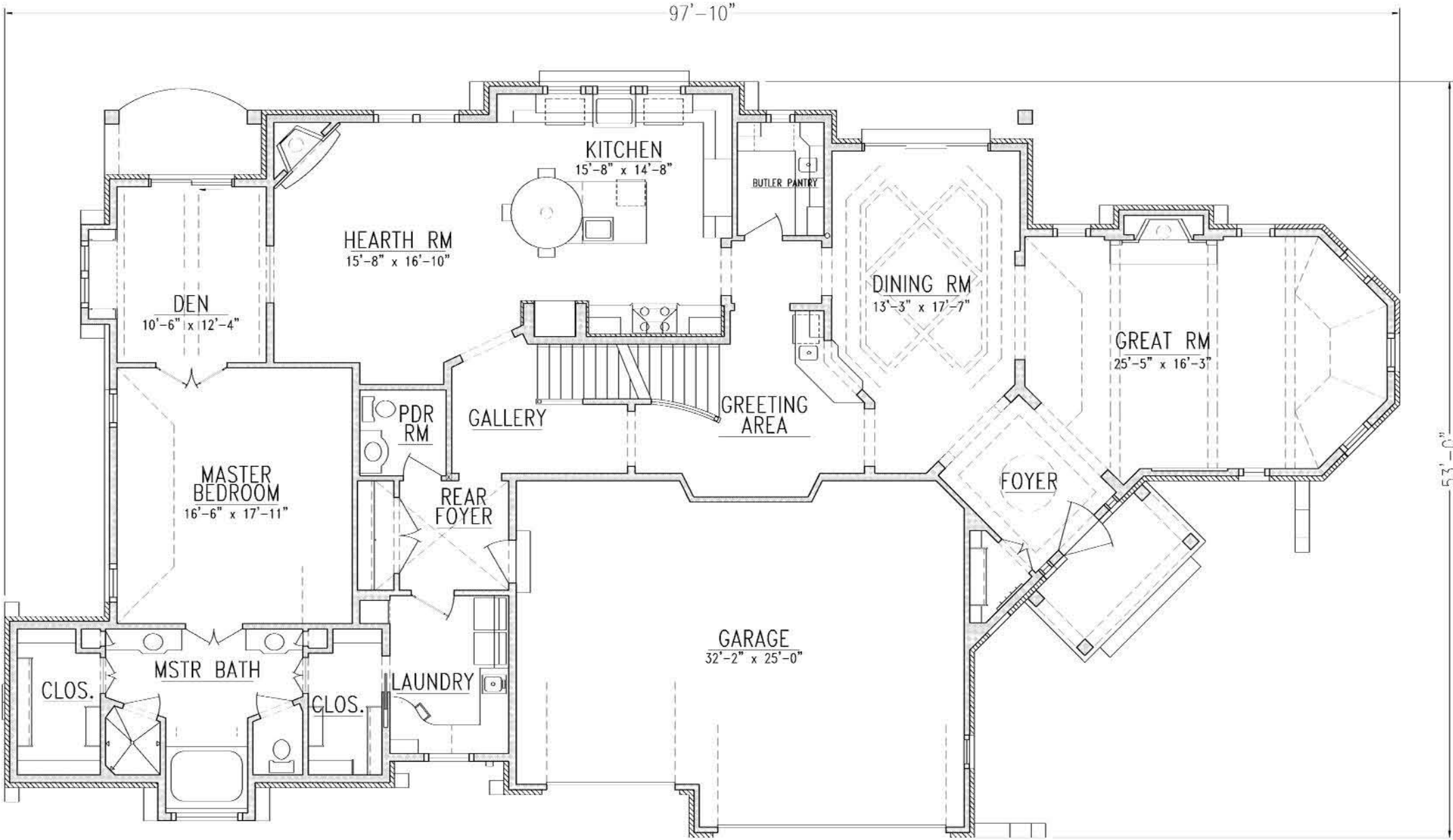
*Discover the Art of Living Exceptionally*

18855 Chapel Hill Drive  
The Preserve at Chapel Hill Subdivision  
Brookfield

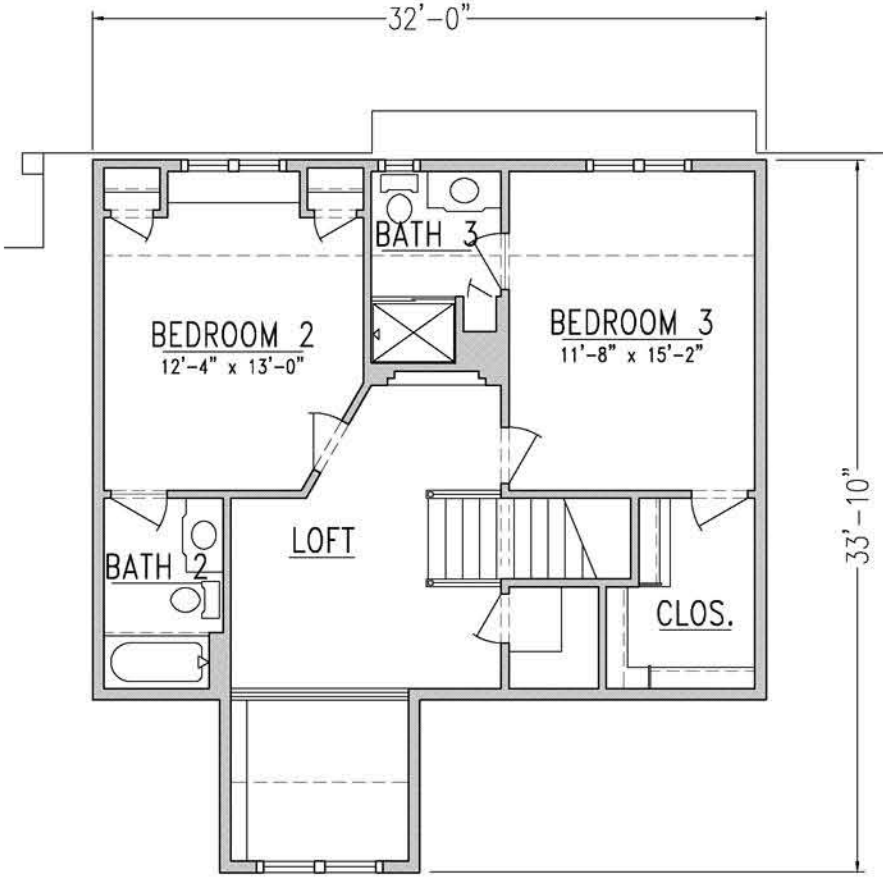
Model Hours: Saturday and Sunday 12:00 Noon to 4:00 p.m.  
Or contact a Chapel Hill Sales Representative for a Private Tour

# The Cherbourg

3,701 sq. ft.



**First Floor Plan**  
2,902 sq. ft.



**Second Floor Plan**  
799sq. ft.

\$ \_\_\_\_\_  
Base Price  
Excluding Lot, Site Improvements & Decorating

*Also Available:*  
*The Chermont Series*  
*Front Entry Garage at 3090 sq. ft.*  
*Side Entry Garage at 3090 sq. ft.*



Note: This plan constitutes the legal property of Homes by Chapel Hill, and the use or copy of these plans or the creation of any derivative thereof without the express written consent of Builder is strictly prohibited and constitutes a violation of Builder's proprietary and/or copyright rights. All Rights Reserved. All dimensions are interior, approximate and subject to change at builder's discretion. Rev. 10-2008